

light duty shelving

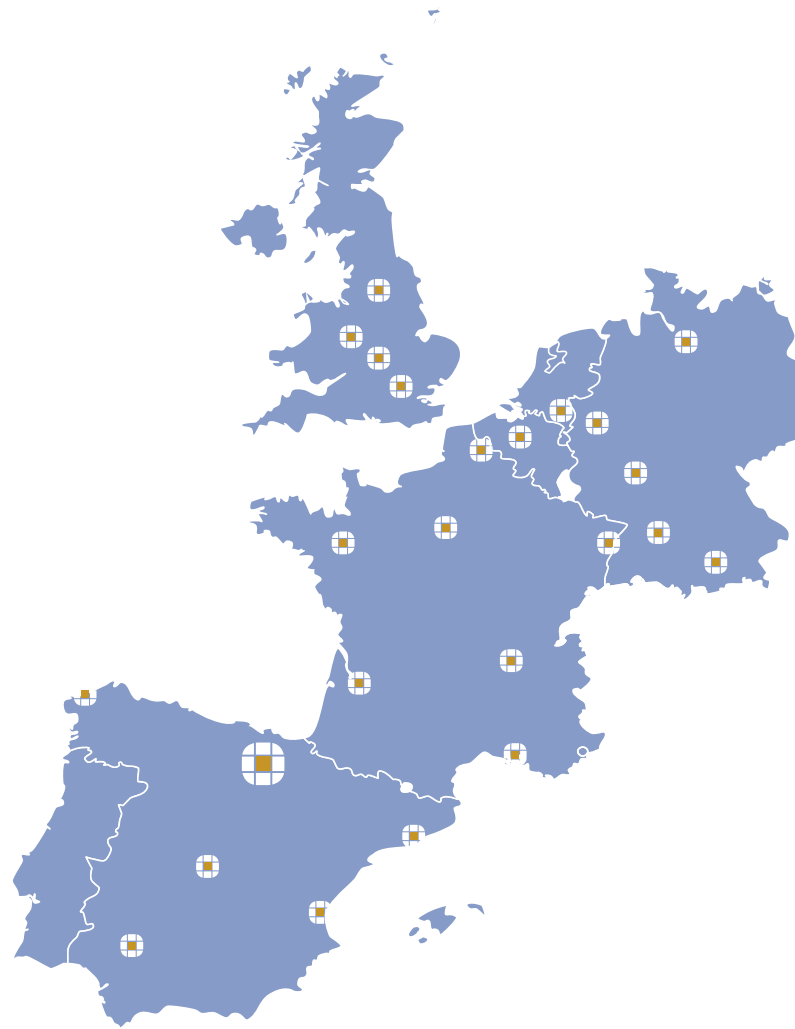
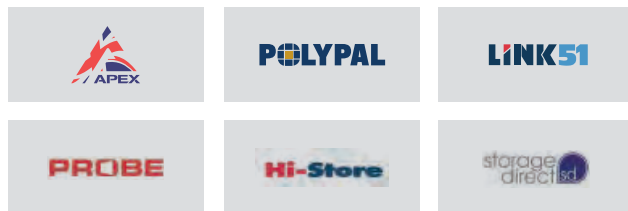


The Whittan group

POLYPAL is a subsidiary of the Whittan Storage Systems Group, based in the UK, the leading European supplier of top-quality storage systems with customers in more than 30 countries. Whittan Group consists of a network of companies, which design, manufacture and install a wide range of storage solutions across Europe.



GROUP OF COMPANIES



Polypal factory in Iurreta (Biscay, Spain)

Polypal

With more than 100 years of experience in this industrial sector, POLYPAL STORAGE SYSTEMS S.A. specialises in the design, manufacturing and installation of a wide range of storage solutions.

POLYPAL has subsidiaries in Germany, Belgium, France and the Netherlands, in addition to five offices in Spain.

POLYPAL's production facility is located in Iurreta (Biscay-Spain), only 30 km away from Bilbao, 25 km away from the international airport and 30 km away from the Port of Bilbao. The factory has a gross floor area of 10,000 m², in which modern equipment and technical resources are used by a team with vast experience, under a strict quality system with certifications by the ISO 9001, ISO 3834 and UNE-EN 1090 standards.

POLYPAL and the Whittan Group are members of different maintenance organizations:





POLYPAL's light duty shelving solutions **provide an answer to the manual storage and picking needs** in industrial or office environments.

Light duty

POLYPAL's light duty shelving solutions are basic organisation elements in warehouses and filing systems.

POLYPAL has designed two independent light duty systems, which can be adapted to any need, in compliance with the **strictest safety and resistance standards during use:**

- Light duty industrial shelving
- Shelving solutions for offices and filing systems

Both share the main advantages of this solution:

- Modular distribution**, guaranteeing that the use of available space is optimised.
- Capacity to adaptation** to different environments, with a large number of accessories, so the solution can be integrated in industrial or office environments.
- Versatility**, thanks to the modification and adjustment capacity of the components of the solution.

POLYPAL's light duty shelving solutions feature a protective ActiveCoat finish, an **anti-bacterial coating that inhibits the growth of bacteria and fungi**, which creating a more hygienic environment for staff and stored products.

 **AC+IVECOAT**[®]
anti-bacterial technology



Light duty industrial storage

POLYPAL's industrial shelving solutions are multi-purpose and highly resistant systems that allow the storage of small to medium-sized parts and is **perfect for the storage of all sorts of accessories: hardware store, car industry, chemist's, textile, packages, spare parts, etc.**

Thanks to its many different available configurations, it opens up many possibilities for storing different types of goods, featuring the following:

- **3 different types of upright**, adapting to the load requirements of each user.
- **3 different shelf models**, interchangeable according to the load that the shelving must support.
- **Many different accessories and finishes**, offering a high flexibility and capable of optimising the available space.

Its detailed design and finish, with no rough edges or sharp corners, and shelving supports with systems that prevent the shelf from slipping out of its position, guarantee a more comfortable and safer workplace.

The storage capacity ranges from small parts to loads of up to 350 kg per shelf. In addition, the structure can be used as the base to design other storage systems:

- Floor level **manual picking** implementations.
- **Multitier aisles and walkways** to access high-rise shelving.
- **Mezzanine floors** supported by POLYPAL's industrial shelving solutions.
- **Picking installations at a height, with order picker.**

Many different configurations are available (the length, height and depth can be adapted). Sorting racks of different dimensions can be easily built on the existing shelving structure, with no need for additional screwing/unscrewing, guaranteeing the perfect assembly.

Many different accessories: rear cladding, side hung doors, plastic boxes, bin fronts, partitions, hanging garment rails, etc.

POLYPAL's industrial shelving solutions with manual shelf loading systems have been specially designed for the **manual storage of light duty loads.**



Light duty industrial storage system





standard colours



Graphite



RAL 7035

optional frame colours



RAL 7035



RAL 3020



RAL 5001



RAL 6005

upright posts



Standard "S"

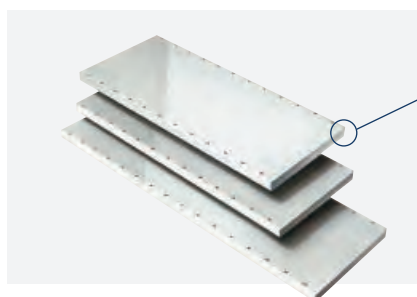


Medium "H"



Extra "E"

shelves



Shelf section

Increases the resistance of the shelf to support the load.

3 types of upright post and shelf (S, H and E) to adapt the shelving to all loading requirements.

Accessories

vertical dividers full or partial

In the case of vertical dividers on each shelf, these can be supplied to cover all or part of the space inside



bin fronts

Vertical or at an angle (outwards). They prevent loose goods placed on the shelf from falling off. They are compatible with the use of vertical dividers.



Angled bin fronts
Full divider



Vertical bin fronts
Partial divider

base plate cover

Keeps the gap between the lower shelf and floor closed. It prevents dust and debris from accumulating under the shelving.



plastic boxes

They allow easy access to small items, with interior dividers to create internal compartments.

Available in 3 sizes. Supplied with stock labels.



shelf box

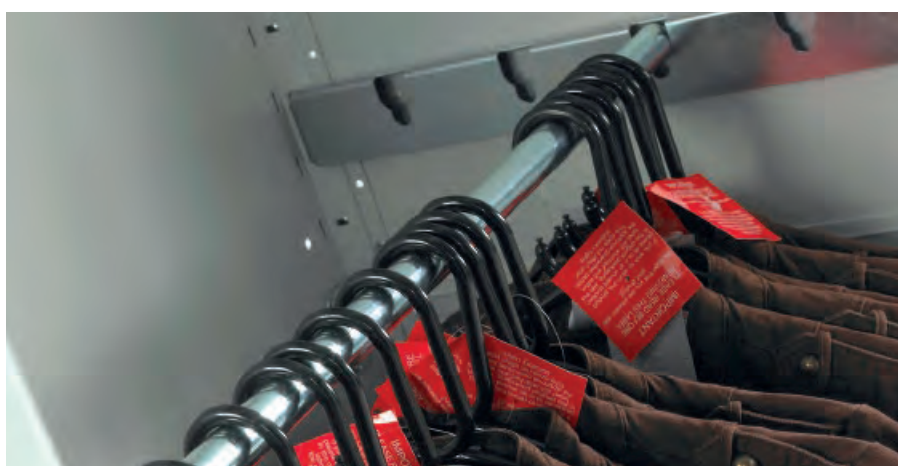
Used to organise fragile items.

- With adjustable dividers to create small compartments.
- With telescopic supports.

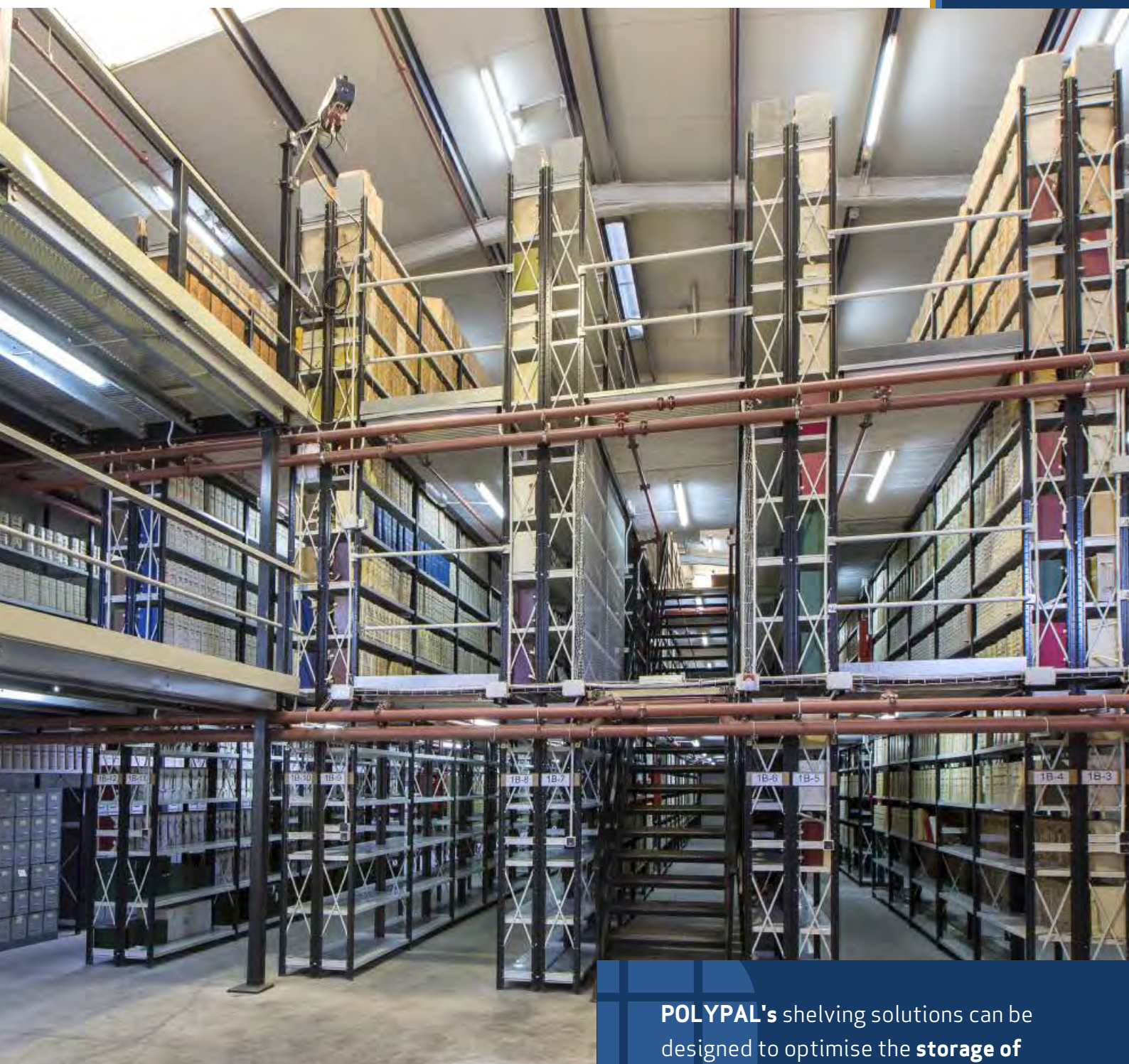


hanging garment rail

Hanging garment storage, with no need for additional shelves.







POLYPAL's shelving solutions can be designed to optimise the **storage of manual loads at heights.**

multitier

Metal shelving solutions with manual loading multitier with shelves have been **specially designed to store light duty and/or compact loads that are handled manually**, maximising the use of the surface and height of the facility.

This storage system can be supplied in many different sizes and adapted to any loading unit, designing a solution that can be adapted to any type of warehouse.

This shelving design **allows direct picking to all loading units** through the multitier with pedestrian access via staircases or service lifts.





Using the correct filing system is **key to handling documents and managing information efficiently.**

Light duty solutions for offices

POLYPAL's light duty shelving solutions for offices cater to **department or office filing needs, particularly live documents and material references that need to be filed in a handy place.**

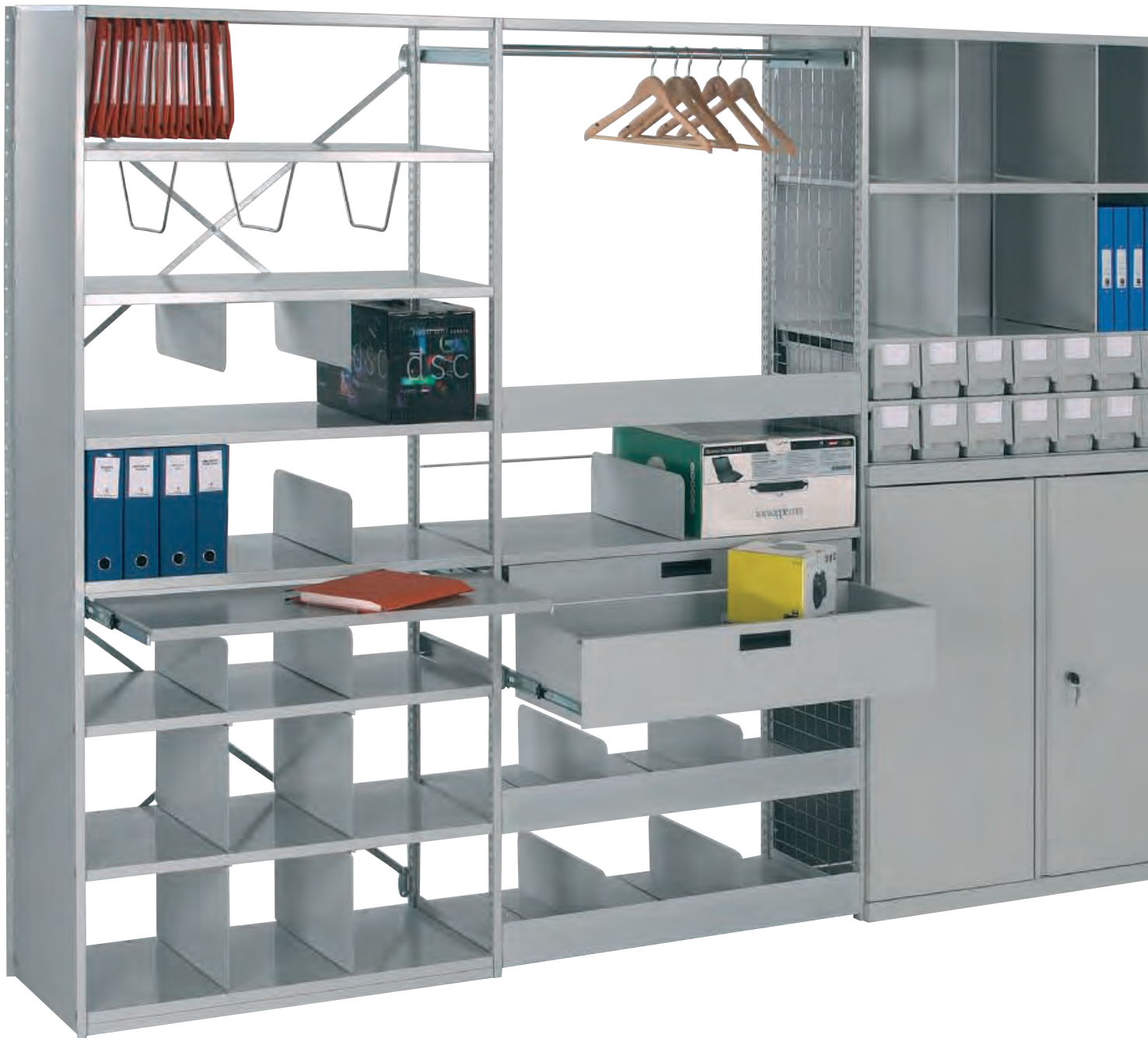
POLYPAL's shelving solutions for filing systems are totally versatile and interchangeable. The shelves and accessories can be installed on any frame, so you can **adapt the shelving to future needs and forget about compatibility issues.** The clip accessories allow quick and easy changes to be made.

One of the main advantages of this system are its shelves with no sharp edges and a sleek design, giving it a uniform

appearance. Its design, together with the wide range of frame colours and optional decorative panels, make this the perfect filing system for offices, archives and shop premises, in which its sleek profile maximises the use of linear space and optimises the use of the storage area.

Fully compatible with our different mobile shelving systems, guaranteeing the optimisation of available space. Please check our catalogue of Mobile Filing systems for more information.

Light duty storage system for offices





standard colour



RAL 7021

optional frame colours



RAL 7021



RAL 3020



RAL 5001



RAL 6005

sides

The sides of the **POLYPAL** light duty shelving solution are made up of **uprights and bracing plates (for simple finishes), or with clad side plates.**

Shelves can be of the open type, which are suitable for folder holders, or closed to maximise the admissible load. **All models feature interchangeable parts.**



Closed side
with "box" type shelf



Open side,
with open-section
bracing plates and
shelf



Flat outer sides
for cared apperance
finishes

Different frames, according to aesthetic requirements. Closed or open shelf, depending on the accessories to install.

Accessories



hanging garment rail

Hanging garment storage, with no need for additional shelves.



open section shelf

In addition to its normal storage function, it can be used to hang standard dimension folders from its bottom section. Adjustable height (in 25 mm pitch).



rear bumpstop

Where necessary, prevents mixing of ring binders or documents on adjacent shelves.



removable folder holder

Ensures easy access to the documents filed in the hanging folders.



partial spacer

Used to divide compartments into different sections and as support for folders or ring binders. 150 mm height can be fitted on the bottom or top shelf.



full spacer

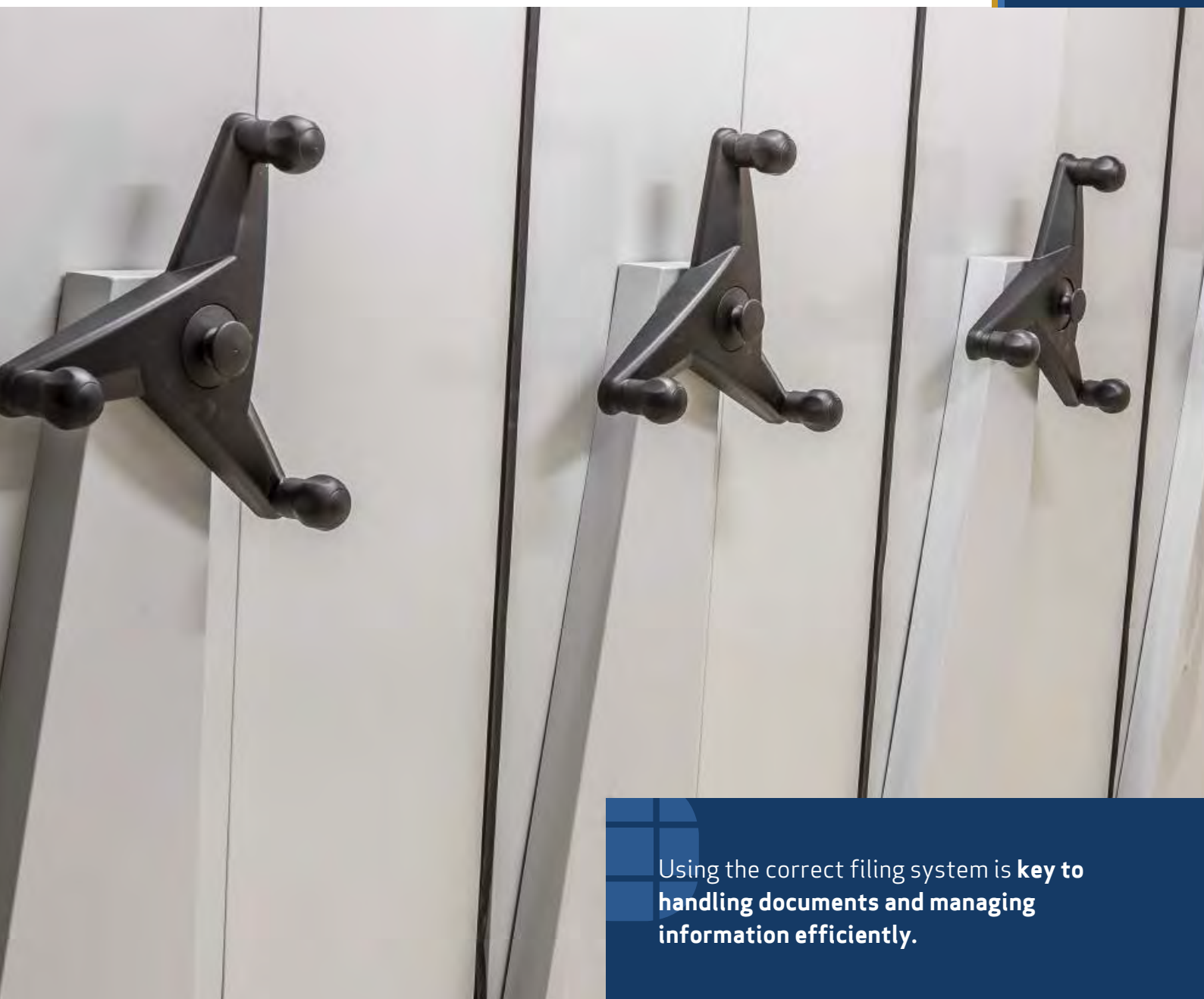
Organising documents allows you to optimise the available space.



spacer under the shelf

Spacer for books and/or folders. Placed under the shelf, held by its spring to the underside effect of the shelf.





Using the correct filing system is **key to handling documents and managing information efficiently.**

Mobile storage

POLYPAL's mobile storage system provides **the most suitable shelving system mounted on a structure of mobile bases, according to the customer's needs.**

This structure slides on rails secured to the floor, moving the entire shelving structure and freeing up the aisle before carrying out specific operations. **This system is used to ensure direct access to each shelving with a single aisle, considerably reducing the need for storage space and without reducing the accessibility to the product.**

Light mobile shelving structures are **very useful in areas in which there is a high cost of floor space or in small offices.**

Main uses:

- **Industrial:** car accessories, spare parts, museums, etc.
- **Office:** document filing, office supply storage, medical records and general filing, etc.

In addition, installing mobile shelving solutions makes it easier to control access to stored goods or documents; using assembly locking systems with locks for the entire facility or only in some areas.



The entire shelving structure can be accessed from a **single aisle**.

how it works

- **Identify the module** in which the product to access is stored, or the space in which the product to store will be deposited.
- **Open the adjoining aisle** next to this module using the ergonomic handwheels, moving all other modules.
- **Access the new aisle** and perform the required tasks.

Storing company records and files on a company's premises is a time consuming process and requires a major resource management effort. In addition, it is costly in terms of space efficiency. Mobile filing systems make it easy to access these records and files, offer an effective solution at a low cost to satisfy file organisation needs and offer the opportunity to increase productivity and maximise the interior space.



mobile shelving with no rails

- **Quicker** installation
- Easy to clean
- **Aisles free of obstacles**, reducing the risk of tripping and allowing the use of forklifts.

decorative panels

The file can blend with the rest of the office space thanks to its **different finishes and colours**.

locks

Used **to store sensitive or valuable items** because the shelving can be closed to prevent access to the files or be locked in a restricted area.

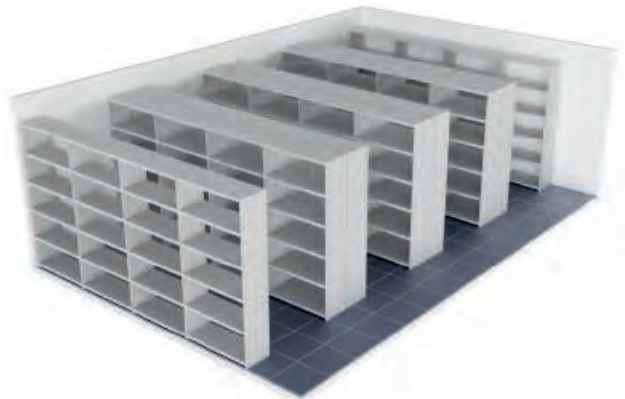


Many different inner accessories, such as: spacing partitions, side hung doors, bay doors, telescopic drawers, spacers, stops, bin fronts, etc. (as required for the fixed shelving system)

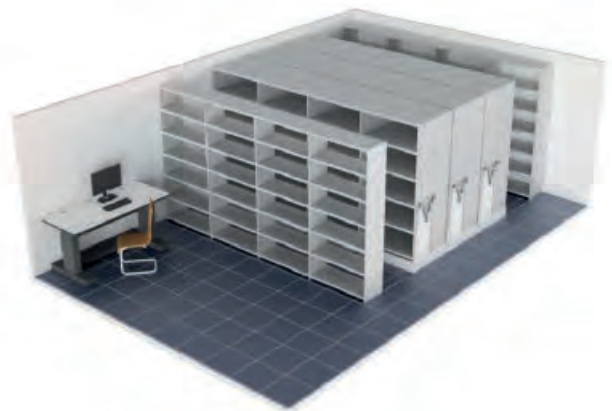
Use of space

Options for 40m²

- Type: **Fixed shelving**
- Capacity: 160 load levels

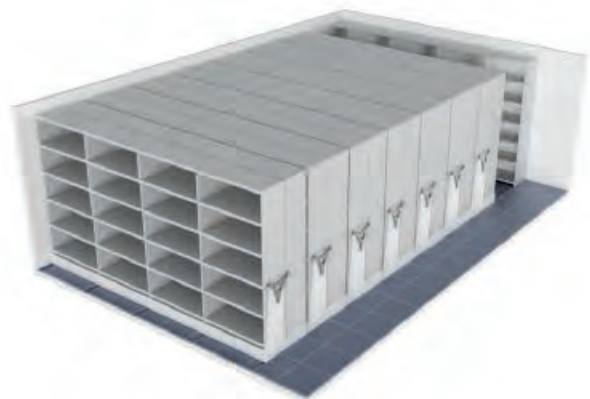


- Type: **Multi-purpose shelving and space**
- Capacity: 160 load levels



- Type: **Shelving on mobile bases**
- Capacity: 300 load levels

Increases storage capacity by 87.5%.





Pallet racking



Medium duty shelving



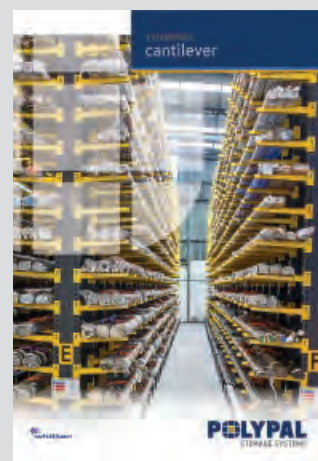
Light duty shelving



Mobile bases shelving



Mezzanine floors



Cantilever storage



Slotted angle



Racking technical inspection



Lockers

POLYPAL SPAIN

Iurreta (Biscay)

T: +34 94 621 05 00

E: info@polypal.com

POLYPAL BELGIUM

Hasselt

T: +32(0) 11 87 08 07

E: info@polypal.be

POLYPAL FRANCE

Grigny

T: +33 1 69 43 26 26

E: contact@polypal.fr

POLYPAL GERMANY

BadHomburg

T: +49 (0) 6172 99669-0

E: info@polypal.de

POLYPAL NETHERLANDS

Swalmen (Reubenberg)

T: +31 (0)8876 59 700

E: info@polypal.nl

FACTORY AND CENTRAL SERVICES

Bidebarrieta Kalea, 1A,
48215 Iurreta, (Biscay)

 +34 946 210 500

 www.polypal.com

 info@polypal.com

Copyright Polypal Storage Systems S.A. | Polypal se reserva el derecho de variar las características de este catálogo sin previo aviso.

